

# CRP Land for Sale

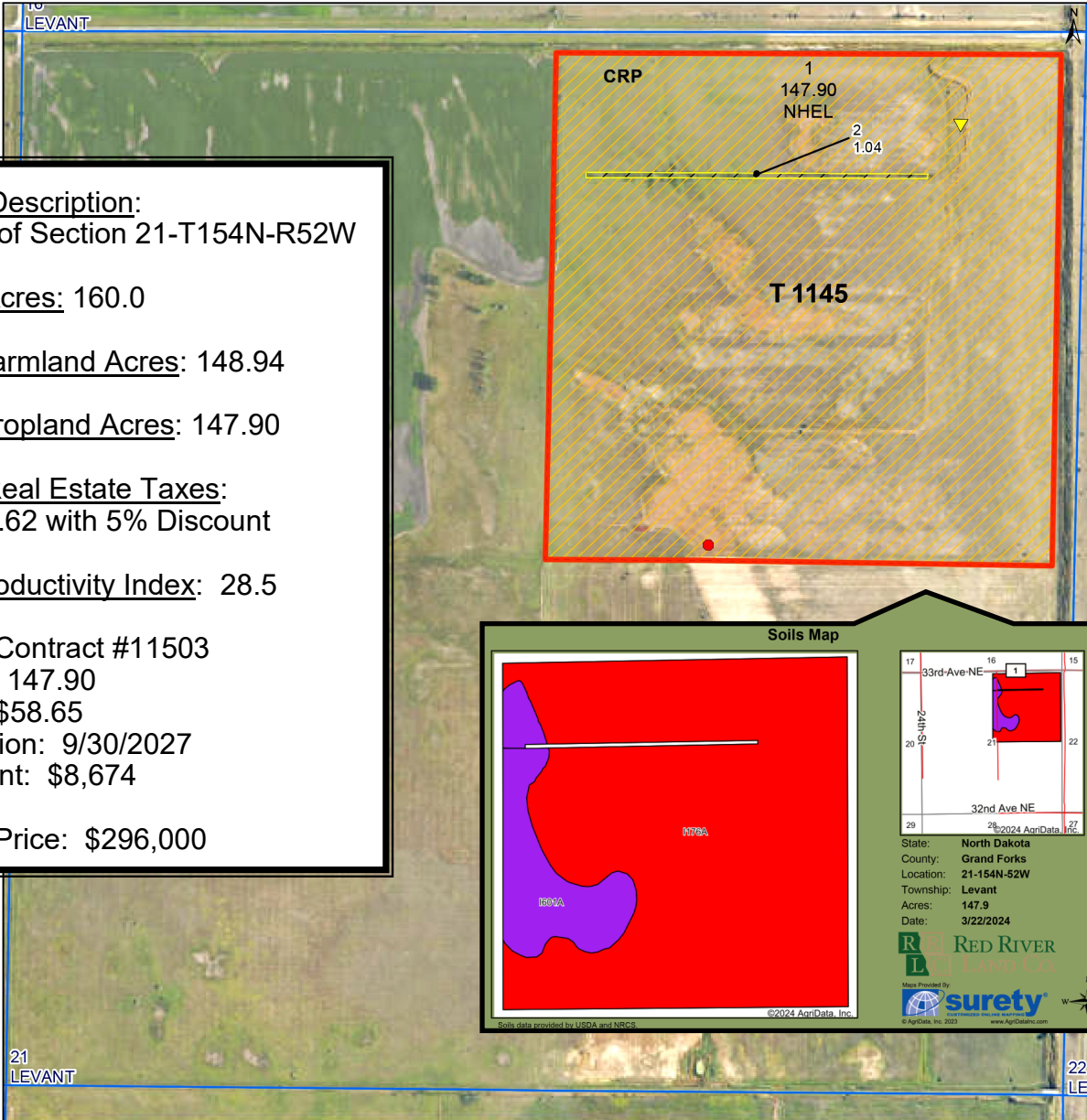
**Levant Township • Grand Forks County, ND**



**147.9 Acres of CRP**

**Located 8 Miles Northwest of Manvel, ND**

**Listed Price: \$296,000**



**Legal Description:**  
NE1/4 of Section 21-T154N-R52W

**Total Acres:** 160.0

**FSA Farmland Acres:** 148.94

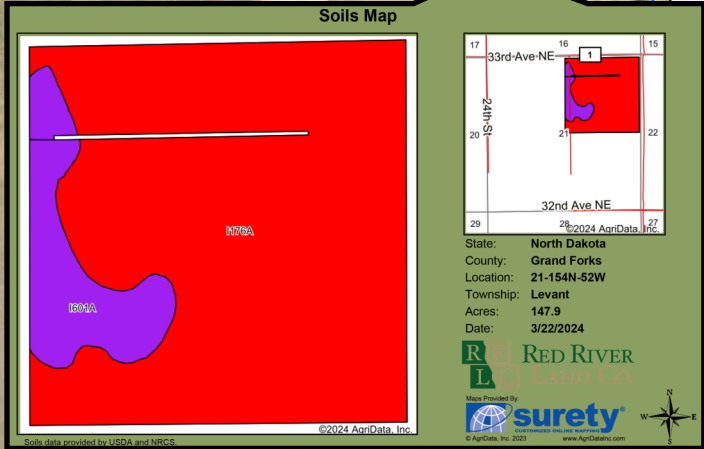
**FSA Cropland Acres:** 147.90

**2023 Real Estate Taxes:**  
\$1,105.62 with 5% Discount

**Soil Productivity Index:** 28.5

**CRP:** Contract #11503  
Acres: 147.90  
Rate: \$58.65  
Expiration: 9/30/2027  
Payment: \$8,674

**Listed Price:** \$296,000



**Common Land Unit**

- CRP
- Tract Boundary
- Non-Cropland
- PLSS
- Cropland

**Wetland Determination Identifiers**

- Restricted Use
- Limited Restrictions
- Exempt from Conservation Compliance Provisions

**Unless Otherwise Noted:**  
All crops are for grain  
All crops are non-irrigated  
Shares are 100% to Operator

**2024 Program Year**  
Map Created March 14, 2024

**S21 T154N R52W**  
Phy Cnty: Grand Forks

0 235 470 940 Feet

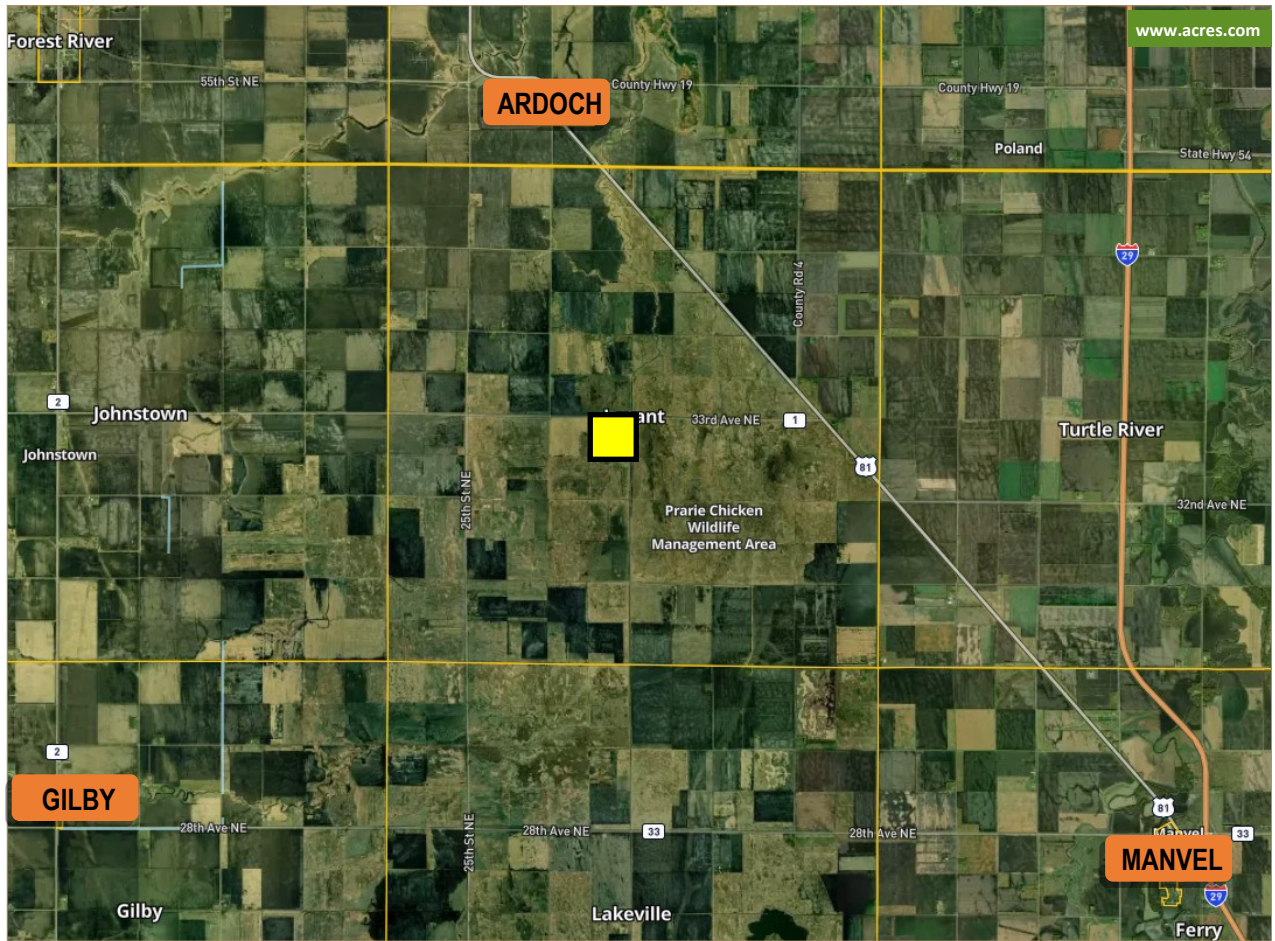
United States Department of Agriculture (USDA) Farm Service Agency (FSA) maps are for FSA Program administration only. This map does not represent a legal survey or reflect actual ownership, rather it depicts the information provided directly from the producer and/or National Agricultural Imagery Program (NAIP) imagery. The producer accepts the data 'as is' and assumes all risks associated with its use. USDA-FSA assumes no responsibility for actual or consequential damage incurred as a result of any user's reliance on this data outside FSA Programs. Wetland identifiers do not represent the size, shape, or specific determination of the area. Refer to your original determination (CPA-026 and attached maps) for exact boundaries and determinations or contact USDA Natural Resources Conservation Service (NRCS). **The imagery displayed on this map was collected in calendar year 2023.**

Area Symbol: ND035, Soil Area Version: 27

Code	Soil Description	Acres	Percent of field	PI Legend	Non-Irr Class *c	Productivity Index
I176A	Ojata silty clay loam, 0 to 1 percent slopes	128.68	87.0%		VIIs	25
I601A	Bearden silty clay loam, moderately saline, 0 to 2 percent slopes	19.22	13.0%		IIIs	52
<b>Weighted Average</b>					<b>5.61</b>	<b>28.5</b>

\*c: Using Capabilities Class Dominant Condition Aggregation Method





Drain on east side of property.

3100 S Columbia Rd, Suite 300  
Grand Forks, ND 58201



**Chris Griffin**

Cell: 218-779-1064  
chris@redriverlandco.com

**John Botsford**

Cell: 701-213-6691  
john@redriverlandco.com

**Nick Skjerven**

Cell: 218-791-5002  
nick@redriverlandco.com

**Real Estate Sales • Beet Stock Sales • Farm Management**

NOTE: Red River Land Company assembles information from sources considered reliable but does not guarantee accuracy. Each prospective buyer should conduct their own due diligence concerning the property.

[www.redriverlandco.com](http://www.redriverlandco.com) | Office: 701-757-1888 | Fax: 701-566-8760