

# WRP LAND FOR SALE

## Joliette Township | Pembina County

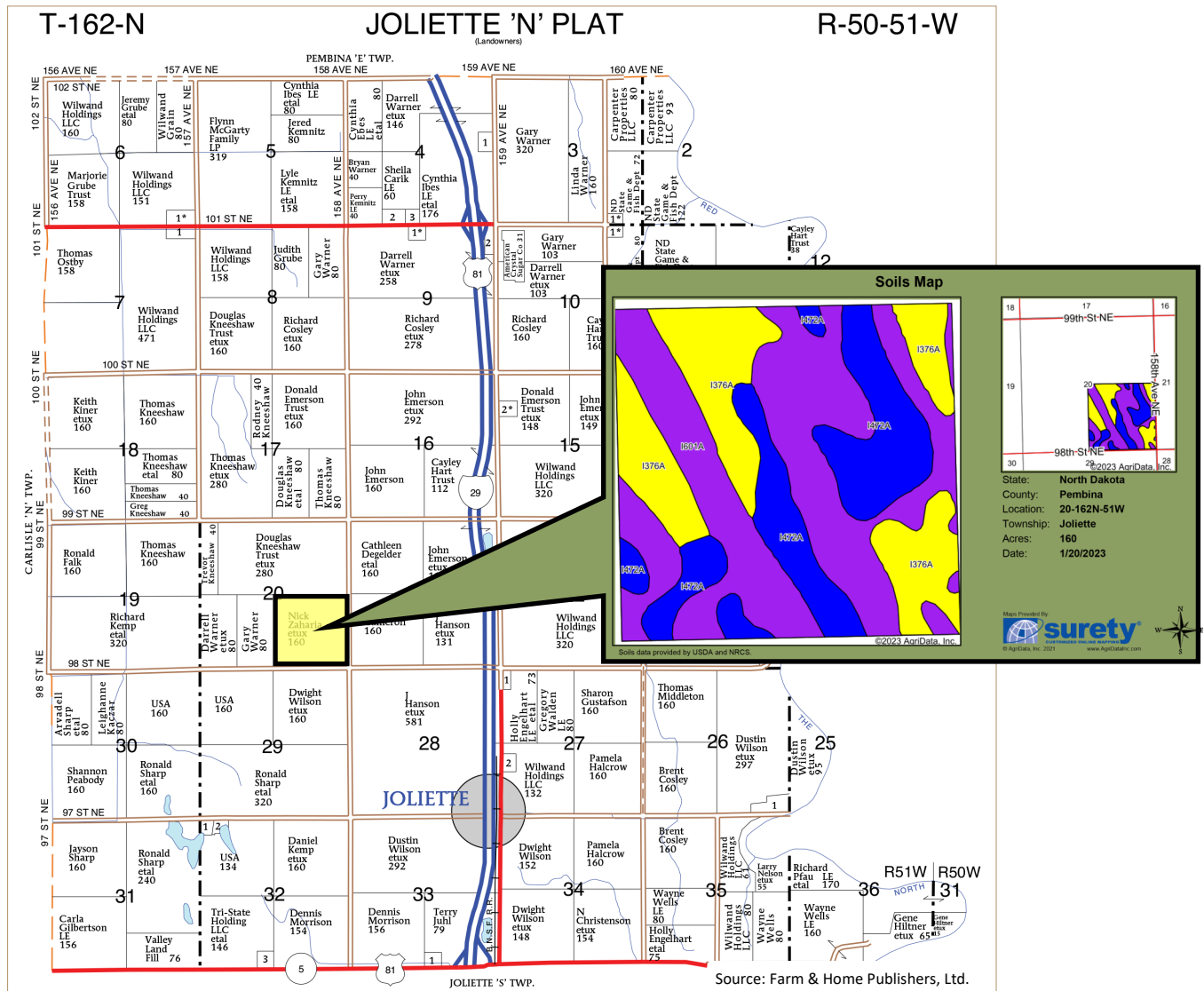
## Joliette, North Dakota



**Located 2 Miles NW of Joliette, ND**  
**156.97 Acres of WRP Land**  
**Listed Price: \$67,000**

<b><u>Legal Description:</u></b> SE1/4 of Section 20-T162N-R51W <b><u>Total Acres:</u></b> 160	<b><u>WRP Easement #:</u></b> 666633-1000155* <b><u>WRP Easement Acres:</u></b> 156.97 <b><u>Expiration:</u></b> December 2040
<b><u>2022 Real Estate Taxes:</u></b> \$206.65 w/5% discount	<b><u>Soil Productivity Index:</u></b> 65.5

\*Copy available on request. The Wetlands Reserve Program (WRP) is a voluntary program under which USDA may purchase conservation easements from, or enter into restoration cost-share agreements with, eligible landowners who voluntarily cooperate in the restoration, enhancement, and protection of wetlands and associated lands.



Area Symbol: ND067, Soil Area Version: 24

Code	Soil Description	Acres	Percent of field	PI Legend	Non-Irr Class *c	Productivity Index
I601A	Bearden silty clay loam, moderately saline, 0 to 2 percent slopes	75.55	47.2%		IIIs	52
I376A	Colvin silty clay loam, 0 to 1 percent slopes	43.84	27.4%		IIw	68
I472A	Perella silty clay loam, 0 to 1 percent slopes	40.61	25.4%		IIw	88
Weighted Average					2.47	65.5

\*c: Using Capabilities Class Dominant Condition Aggregation Method  
Soils data provided by USDA and NRCS.

**Chris Griffin, Salesperson**

Cell: 218-779-1064

chris@redriverlandco.com

**John Botsford, Broker**

Cell: 701-213-6691

john@redriverlandco.com

**Nick Skjerven, Salesperson**

Cell: 218-791-5002

nick@redriverlandco.com

## Real Estate • Beet Stock Sales • Farm Management

NOTE: Red River Land Company assembles information from sources considered reliable but does not guarantee accuracy. Each prospective buyer should conduct their own due diligence concerning the property.



www.redriverlandco.com | Office: 701-757-1888 | Fax: 701-566-8760