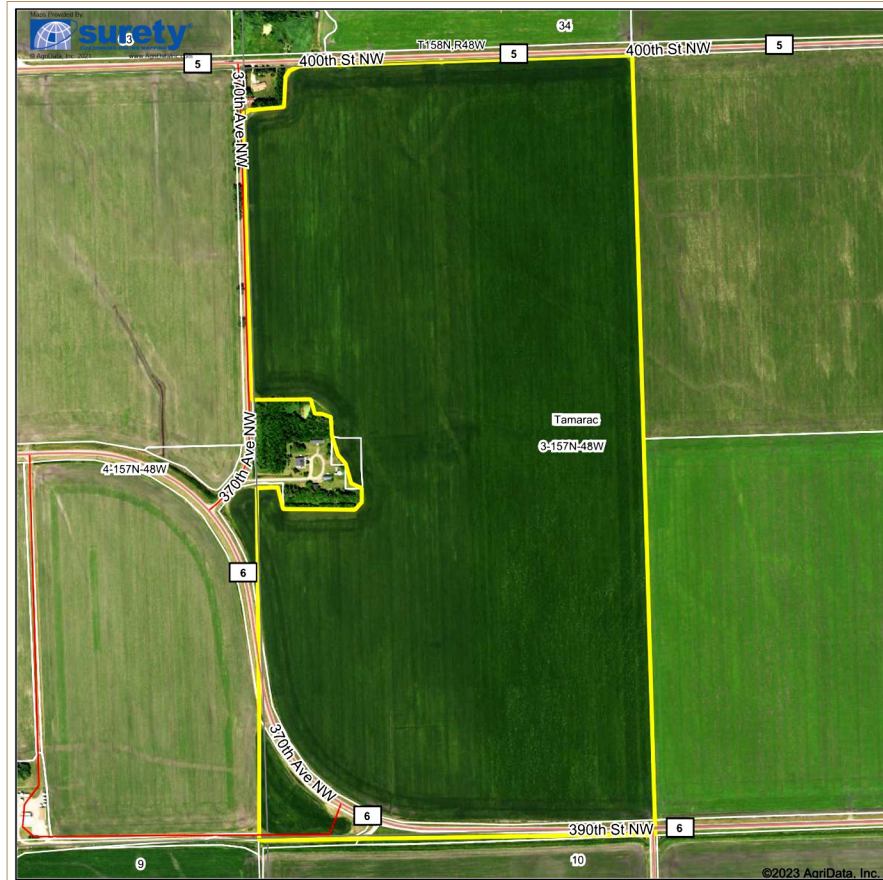
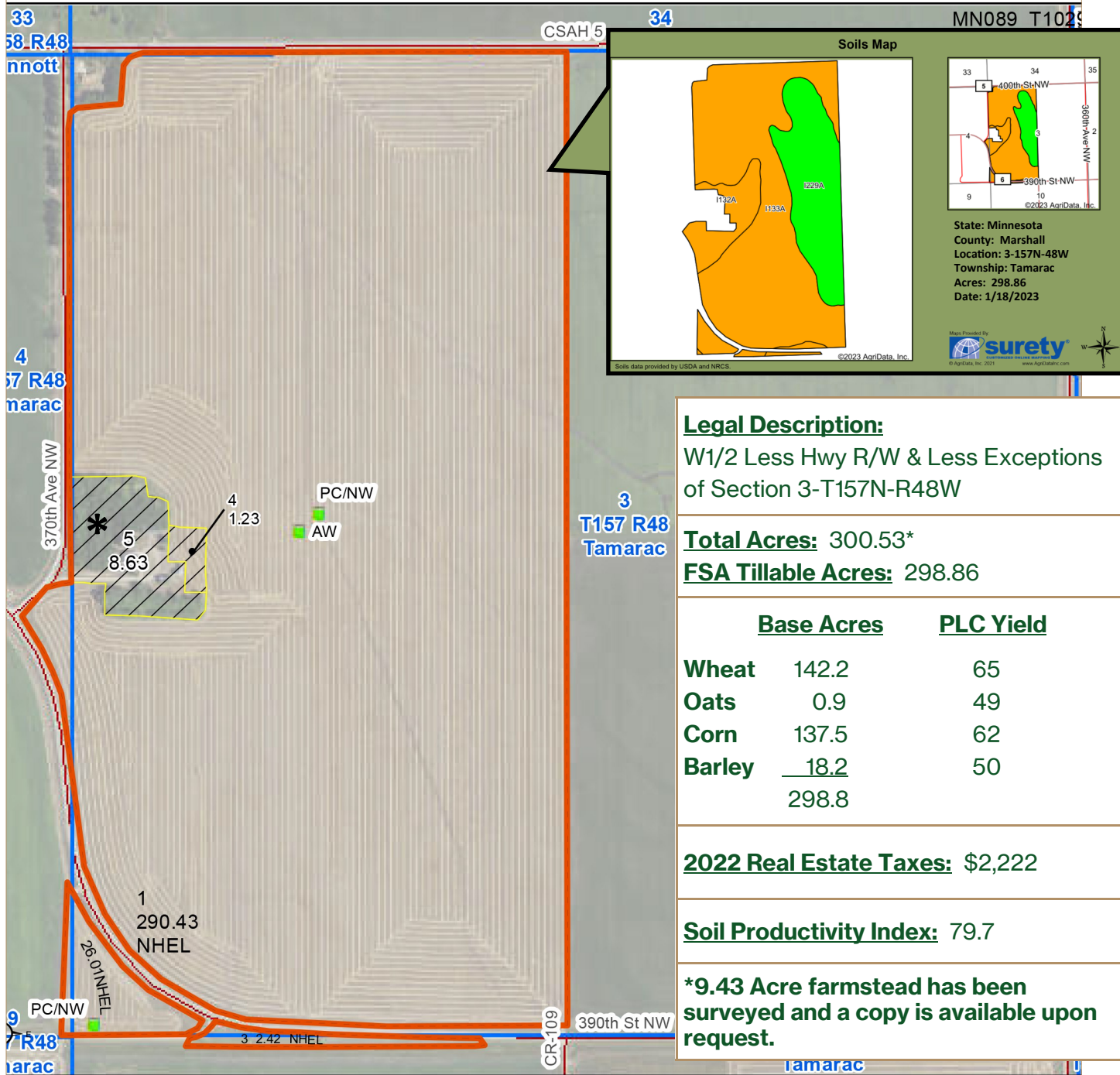


HIGH QUALITY RED RIVER VALLEY FARMLAND FOR SALE

Tamarac Township | Marshall County, MN



Great Access and Location Along Co Hwys #5 and #6
1 Mi East of Stephen, MN & 1/2 Mi from ACSC Beet Piler
298.86 Tillable Acres • 79.7 PI
Excellent Drainage • Available for 2023
Listed Price: \$1,850,000

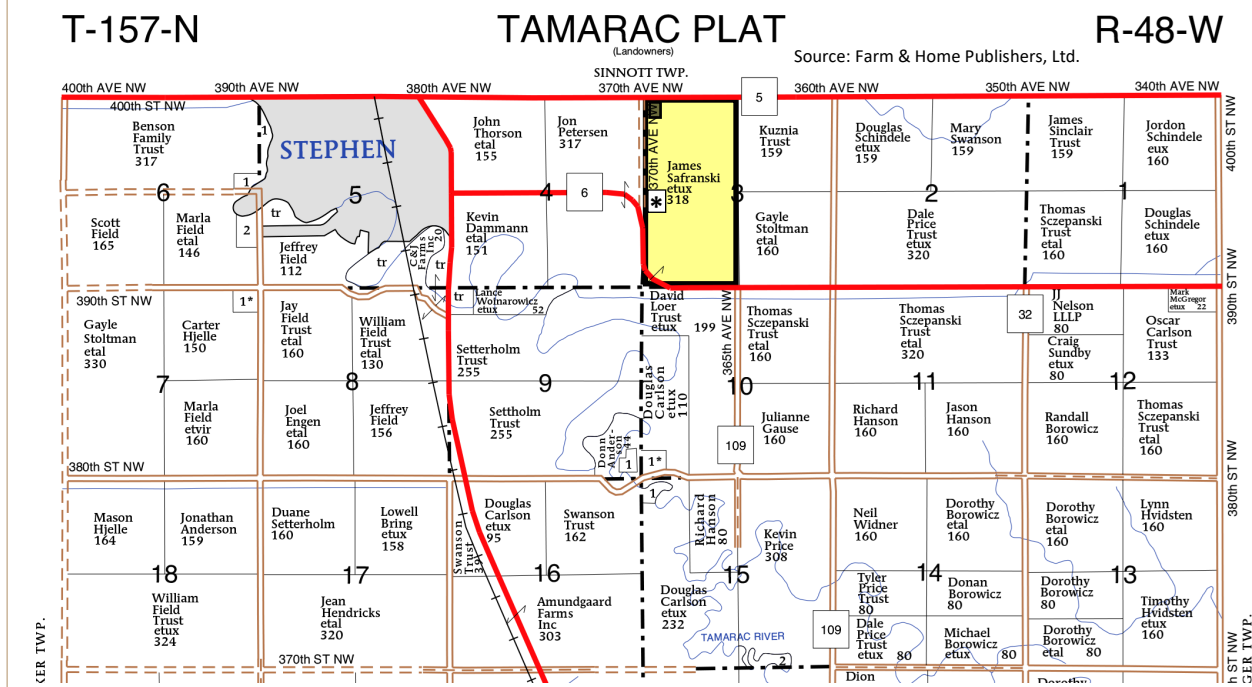
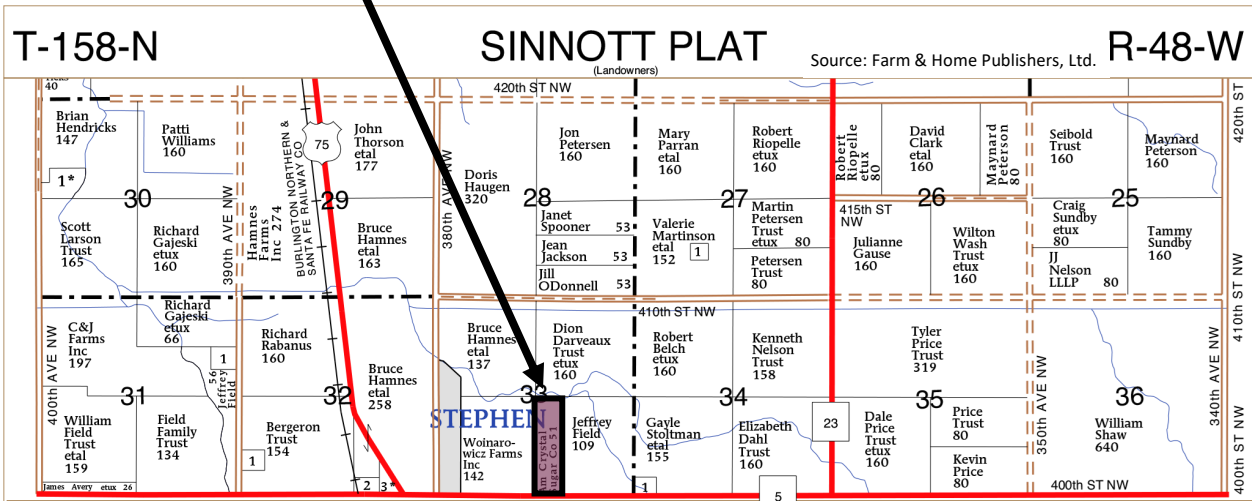


Area Symbol: MN089, Soil Area Version: 22						
Code	Soil Description	Acres	Percent of field	PI Legend	Non-Irr Class *c	Productivity Index
I133A	Northcote clay, 0 to 1 percent slopes	197.17	66.0%		IIw	75
I229A	Fargo silty clay, 0 to 1 percent slopes	73.44	24.6%		IIw	94
I132A	Northcote-Eaglepoint clays, 0 to 1 percent slopes	28.25	9.5%		IIw	75
Weighted Average					2.00	79.7

*c: Using Capabilities Class Dominant Condition Aggregation Method
Soils data provided by USDA and NRCS.

3100 S Columbia Rd, Suite 300
Grand Forks, ND 58201

ACSC PILING STATION



Southwest corner looking Northeast

Farmstead Survey Map





Chris Griffin, Salesperson

Cell: 218-779-1064
chris@redriverlandco.com

John Botsford, Broker

Cell: 701-213-6691
john@redriverlandco.com

Nick Skjerven, Salesperson

Cell: 218-791-5002
nick@redriverlandco.com

Real Estate • Beet Stock Sales • Farm Management

NOTE: Red River Land Company assembles information from sources considered reliable but does not guarantee accuracy. Each prospective buyer should conduct their own due diligence concerning the property.