

Full Section of Pasture Land For Sale
634.43 Acres • Emmons County, ND
Located Near the Missouri River (Oahe Reservoir)

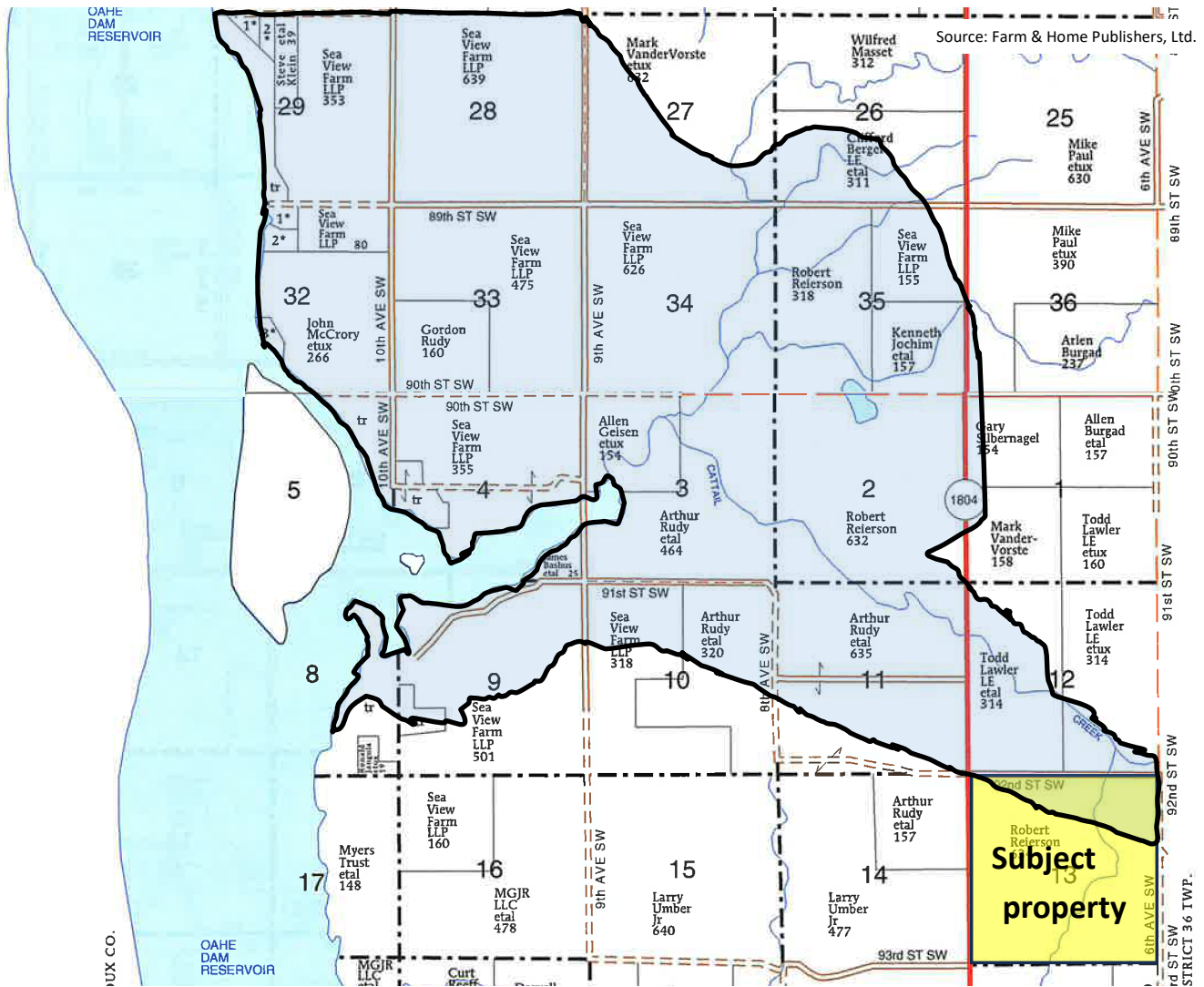


Located 17 Miles West of Strasburg, ND
Additional information available at: www.redriverlandco.com
Available for the 2024 Crop Year

Listed Price: \$1,078,000

FULL SECTION OF PASTURE WITH GREAT ACCESS

This offering consists of a full section of pasture with great access along Hwy 1804. There is a working well with power to it along with a natural spring on the south end of the property. Access to rural water is also available from a line that runs parallel to Hwy 1804.



Cattail & Winona Aquifers





Legal Description:

Section 13 - T130N - R79W
Less 5.57 Ac R/W

Total Acres / Pasture Acres

634.43 629.57

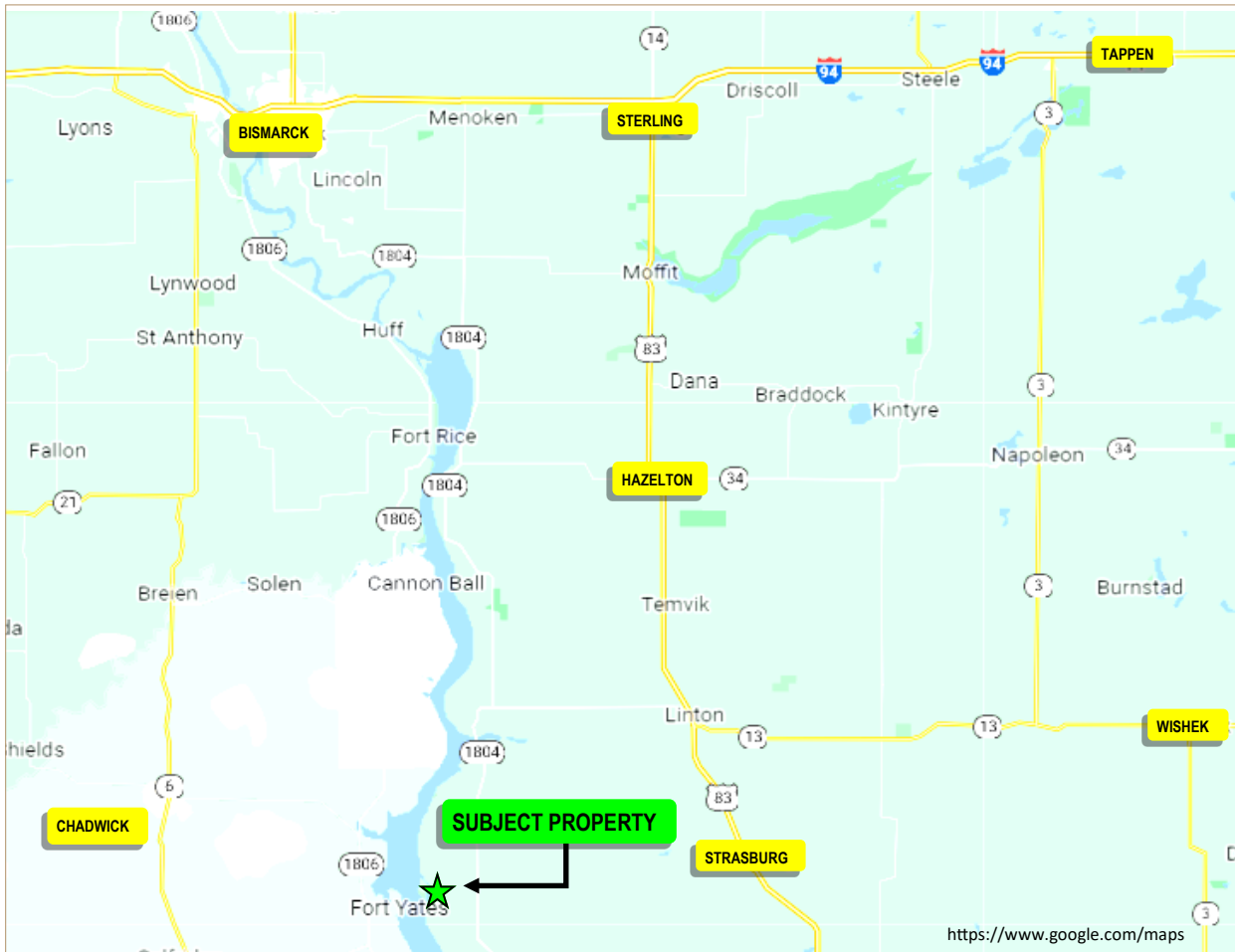
2023 Real Estate Taxes:

\$450.83 with 5% Discount



Location Map

3100 S Columbia Rd, Suite 300
Grand Forks, ND 58201



Chris Griffin

Cell: 218-779-1064
chris@redriverlandco.com

John Botsford

Cell: 701-213-6691
john@redriverlandco.com

Nick Skjerven

Cell: 218-791-5002
nick@redriverlandco.com

Real Estate Sales • Beet Stock Sales • Farm Management

NOTE: Red River Land Company assembles information from sources considered reliable but does not guarantee accuracy. Each prospective buyer should conduct their own due diligence concerning the property.

www.redriverlandco.com | Office: 701-757-1888 | Fax: 701-566-8760